

Industrial confidentiality

PRODUCT SPECIFICATION

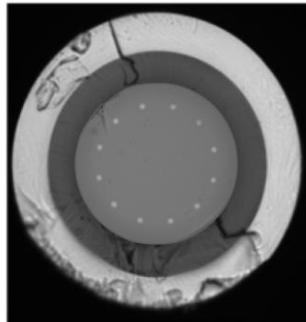
Double Clad Erbium Ytterbium Multicore Fiber

Product code: IXF-2CF-MC-12-EY-6

	Parameter	Specification	Units
1	Core Number	12	
2	Core diameter	6±0.5	µm
3	Mode field Diameter @ 1550nm	6.5+/-0.5	µm
4	Core Spacing	35±0.5	µm
5	Clad diameter	187.5±2.5	µm
6	Coating diameter	355 ± 15	µm
7	Core NA	0.19 ±0.02	
8	Cladding NA	≥0.46	
9	Clad absorption @915nm*	3.5+/-0.5	dB/m
10	Clad absorption @976nm (estimated)	11.5+/-2	dB/m
11	Core absorption @1536nm**	40+/-10	dB/m
12	Multimode background losses	<50	dB/km
13	Proof test level	50	kpsi

*: measured value for the 12 cores

** : value for one core, extrapolated from multimode absorption measurement



Effective date of this document: 12/05/2023

Edition: B

Document reference: IXF-2CF-MC-12-EY-6_edB.pdf

PSD-L-Q-E-086-I

