

Industrial confidentiality

PRODUCT SPECIFICATION

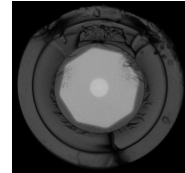
Product code: IXF-3CF-Ho-O-20-250-300

	Parameter	Specification	Units
1	Core diameter	20 ± 1	μm
2	Core NA	0.08 ± 0.01	-
3	Core absorption @1950nm*	>100	dB/m
4	Inner clad diameter (flat-flat)	250 ± 3	μm
5	Inner clad NA	0.22 ± 0.02	-
6	Clad diameter	300 ± 3	μm
7	Core-clad offset	<3	μm
8	Outer clad NA	>0.46	-
9	Coating diameter	450 ± 15	μm
10	Proof test level	>78	kpsi

*: Calculated from multimode absorption value

Comments

Octagonal inner clad shape and circular cladding shape
 Multimode cladding defect free (HeNe tested)
 OH core concentration <0.1 ppm
 Power Conversion Efficiency (PCE) >40%**



** : Not measured but verified experimentally at design stage @ 2100nm

Written by: T. ROBIN

Effective date of this document: 25/04/2019

Edition: A

Document reference: IXF-3CF-Ho-O-20-250-300-edA.pdf

PSD-L-Q-E-086-I

