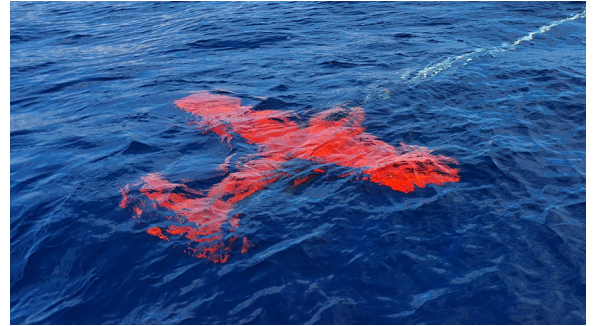


FlipiX

Remotely Operated Towed Vehicle

FlipiX is a Remotely Operated Towed Vehicle (ROTV) designed to be operated autonomously and enhancing uncrewed survey capabilities. Deployed from Unmanned Surface Vessels (USVs) or traditional vessels, FlipiX enables to conduct multi-sensor operations (bathymetric, geophysical and UXO operations). Leveraging best-in class motion control and a reduced operational footprint, FlipiX is a unique conveyance platform for Side Scan Sonars (SSS) and Magnetometers.



FEATURES & BENEFITS

Covering the full autonomous survey scope

- Deployed from USVs and/or traditional survey vessels
- Easily deployed from a ruggedized Launch & Recovery system (easy deployments from a RHIB or light vessel)
- Over The Horizon (OTH) capability when deployed from a USV
- Operating within the most common operating ranges on the market (20-50m)
- Offering tow-speeds up to 7 knots

Enhancing autonomous survey operational efficiency

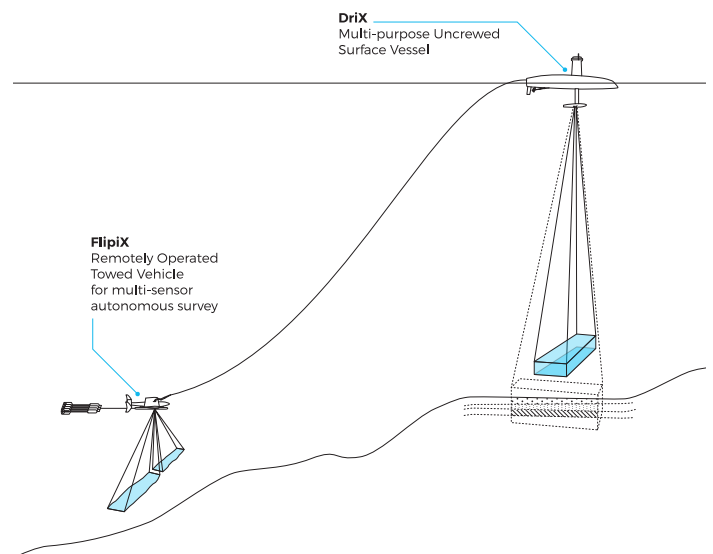
- Reducing survey time by combining bathymetry, geophysics and UXO operations in a single run
- A versatile survey solution able to deploy various instruments such as magnetometers, Side Scan Sonars or custom payloads
- A User-friendly control and monitoring software
- Positive buoyancy for increased safety and easy USV deployments

Providing best in class motion control for enhanced measurement quality

- Autonomous motion control (altitude, pitch and roll) providing enhanced measurement quality
- Increased stability and enhanced manoeuvrability during U-turns
- Optimal positioning of measurement instruments for a data acquisition as close to the seabed as needed (3m above seabed)

APPLICATIONS

- Hydrography
- Geophysics
- UXO and Wreck detection
- Cable & pipe pre-lay, post-lay and as-built inspection
- Dredging
- Environmental assessment



TECHNICAL SPECIFICATIONS

DIMENSIONS

Length	1.8m
Height (Without payload)	0.4m
Width	2.7m
Weight in air (Without Side Scan Sonar)	68kg
Weight in water	Positive buoyancy

PERFORMANCE

Depth rating	300m
Operational depth	Up to 50m
Towing speed	3-7kt
Dive climb speed (m/min)	16-20m/min
Emergency climb speed (m/min)	40m/min
Vertical position accuracy	0.2m
Roll / Pitch measurement accuracy (AHRS unit)	0.1 deg (RMS)
Roll / Pitch stability at fixed altitude on survey line (Flipix)	Better than 1 deg
Max slope, terrain-following mode with pitch control	15%

PAYLOAD

- 1 Side Scan Sonar (Edgetech 4205 or 4200 ROTV)
- 1 magnetometer (Geomatrix G882)

OPTION

- Positive buoyancy 300m tow cable
- DriX connexion kit
- Top side Unit (Rackable or pelicase)