

Apps

Advanced Post Processing Software for iXblue navigation solutions

Apps is a post-processing and batch productivity tool for all the iXblue INS products dedicated to airborne, land and hydrography applications (compatible with both the former and new generation).

Powerful data management, visualization and advanced processing functions make this tool essential for quick and precise trajectory computation.

Apps benefits from smart coupling technique between iXblue inertial algorithm and the GNSS postprocessing engine.



MAIN FEATURES

- All-in-one INS and GNSS post-processing software, including SIGIL¹ smart coupling algorithm
- Forward – backward processing technique
- User friendly MMI for external reference station data selection and import
- Post-processing with customized settings
- Calibration processing tool available for:
 - Lever arm estimation (GNSS and odometer)
 - Misalignment and scale factor (odometer)
- Position, Speed and Attitude computed with reliable standard deviations:
 - Selection of output lever arm & misalignment
 - At rate up to 200Hz or synchronized on eventmarkers
- Flexible data import/export, allowing easy integration in processing workflow
- QA/QC report
- Easy to automate to ensure batch productivity
- Lifetime license, one-year warranty for technical support and software updates

COMPATIBILITY

- Main industry LIDAR and Image Post Processing SW (Riprocess, QINSy, ESRI, ...)
- Dedicated post processing SW thanks to editable output formats

INPUT FILE FORMATS

- iXblue INS postprocessing protocol (@100 or 200Hz)
- GNSS rover raw data in SBF (Septentrio Binary File)
- GNSS reference station in RINEX format
- External position file in predefined text format

OUTPUT FILE FORMATS

- Kml, kmz (Google Earth)
- SBET (POSPac format)
- Plain text file
- imr, .dmr (Inertial Explorer)

REQUIREMENTS

- Microsoft Windows 10
- Intel Core I5 – 2GHz – 4Gb RAM
- 400 Mb HD space
- Google Chrome (latest stable version), Firefox (latest stable version), Microsoft Edge (latest stable version; Chromium-based only), Microsoft Internet Explorer 11.

¹ SIGIL: Septentrio iXblue GNSS Inertial Link

TECHNICAL SPECIFICATIONS

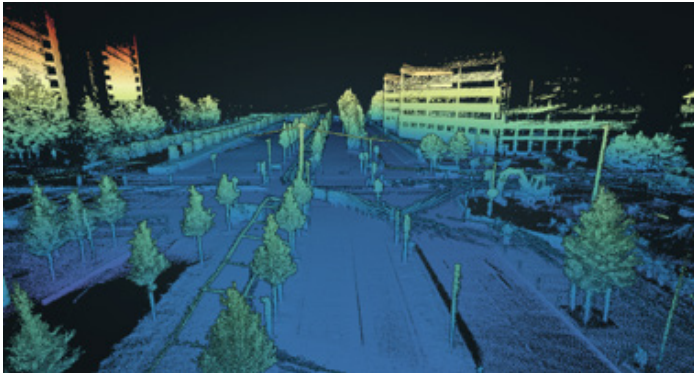
Application	iXblue product	GNSS (raw data)	GNSS (PVT**)	DMI	Vehicle model	Event Marker
Hydrography	Hydrins	●*	●			●***
Land	Atlans A7	●	●	●	CarModel	●
Air	Atlans A7	●	●			●
	Airins	●*	●			●
Rail	Atlans A7	●	●	●	RailModel	●

* only available for raw data acquired with Septentrio receivers

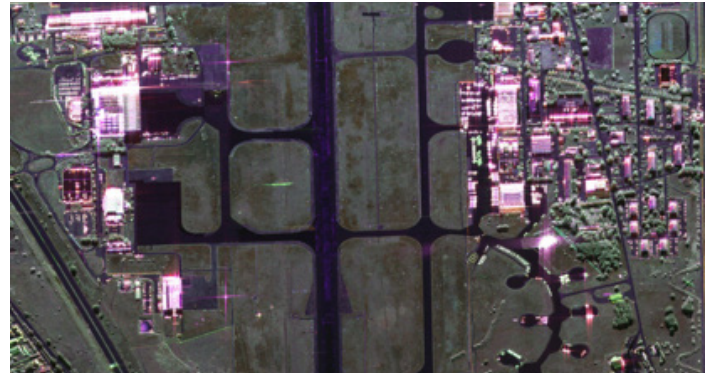
** live PVT data or postprocessed with third-party GNSS software or fixed position from control points

*** external eventmarker only

APPLICATION EXAMPLES



Paris' airport LIDAR mapping using Atlans A7 Land data postprocessed with Apps, Courtesy of Navya



20cm resolution X band SAR image using Airins data postprocessed with Apps, Courtesy of ONERA