

# Apps

## Advanced Post Processing Software iXblue GNSS + INS software solution

Apps is a post-processing and batch productivity tool for the iXblue survey INS product range Atlans Series (compatible with both the former and new generation).

Powerful data management, visualization and editing features and processing functions together with data export capability make this tool essential for quick and precise trajectory computation.

Apps incorporates the innovative GNSS-INS post-processing algorithm, named Septentrio iXblue GPS Inertial Link (SIGIL), which results from a collaborative development effort between Septentrio (GNSS receiver manufacturer) and iXblue.



### MAIN FEATURES

- All-in-one INS and GNSS post-processing software, including SIGIL algorithm
- Forward - backward processing technique
- User friendly MMI for external reference station data selection and import
- Post-processing with customized settings
- Calibration processing tool available for:
  - Lever arm estimation (GNSS and odometer)
  - Misalignment and scale factor (odometer)
- Position, Speed and Attitude computed with reliable standard deviations:
  - Selection of output lever arm & misalignment
  - At rate up to 200Hz or synchronized on eventmarkers
- Flexible data import/export, allowing easy integration in processing workflow
- QA/QC report
- Easy to automate to ensure batch productivity
- Lifetime license, one-year warranty for technical support and software updates

### COMPATIBILITY

- Main industry LIDAR and Image Post Processing SW (Riprocess, QINSy, ESRI, ...)
- Dedicated post processing SW thanks to editable output formats

### INPUT FILE FORMATS

- iXblue INS postprocessing protocol (@100 or 200Hz)
- GNSS rover raw data in SBF (Septentrio Binary File)
- GNSS reference station in RINEX format
- External position file in predefined text format

### OUTPUT FILE FORMATS

- imr, .dmr (Inertial Explorer)
- Kml, kmz (Google Earth)
- SBET (POSPac format)
- ESRI shapefile
- Plain text file

### REQUIREMENTS

- Microsoft Windows 10
- Intel Core I5 - 2GHz - 4Gb RAM
- Google Chrome (latest stable version), Firefox (latest stable version), Microsoft Edge (latest stable version; Chromium-based only), Microsoft Internet Explorer 11.

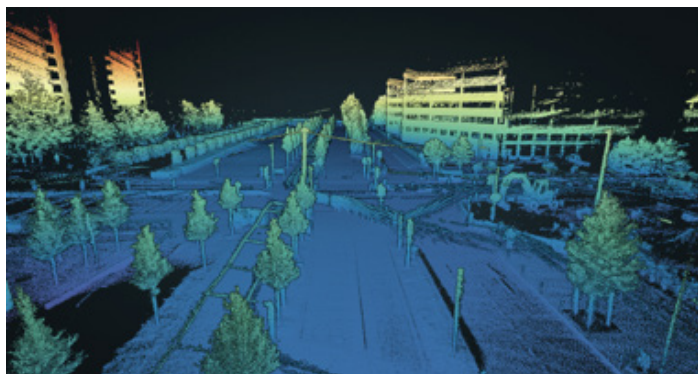
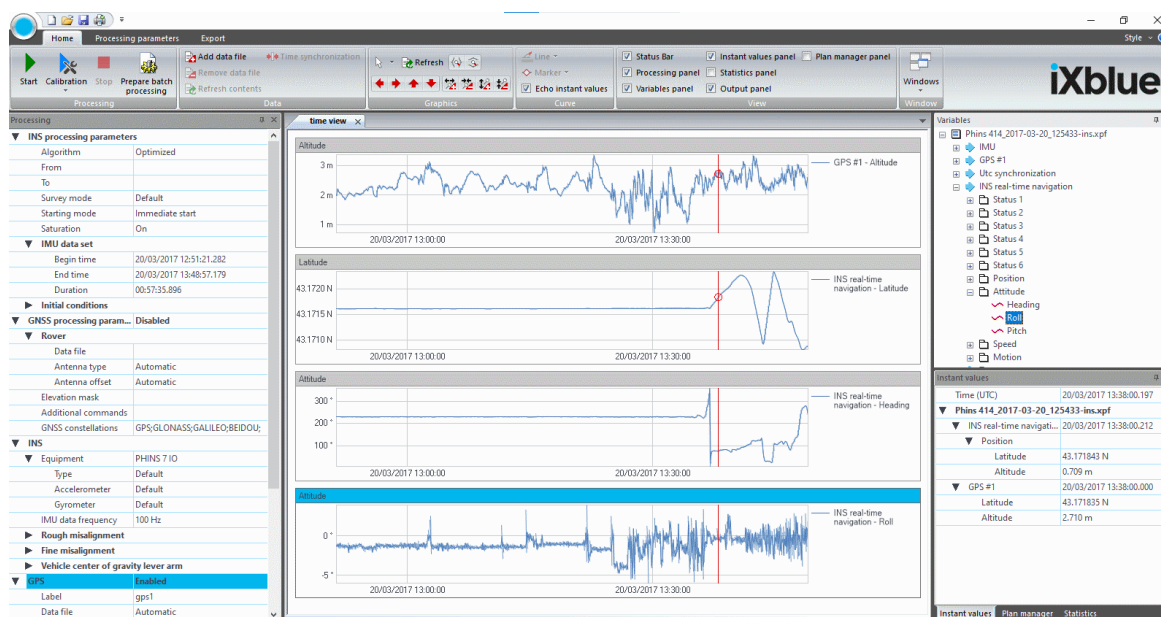
# TECHNICAL SPECIFICATIONS

Application	ixblue product	GNSS (raw data)	GNSS (PVT**)	DMI	Vehicle model	Event Marker
Hydrography	Hydrins	●*	●			●***
Land	Atlans	●	●	●	CarModel	●
Air	Atlans	●	●			●
	Airins	●*	●			●
Rail	Atlans	●	●	●	RailModel	●

\* only available for raw data acquired with Septentrio receivers

\*\* live PVT data or postprocessed with third-party GNSS software or fixed position from control points

\*\*\* external eventmarker only



Paris' airport LIDAR mapping,  
Courtesy of Navya



20cm resolution X band SAR image,  
Courtesy of ONERA