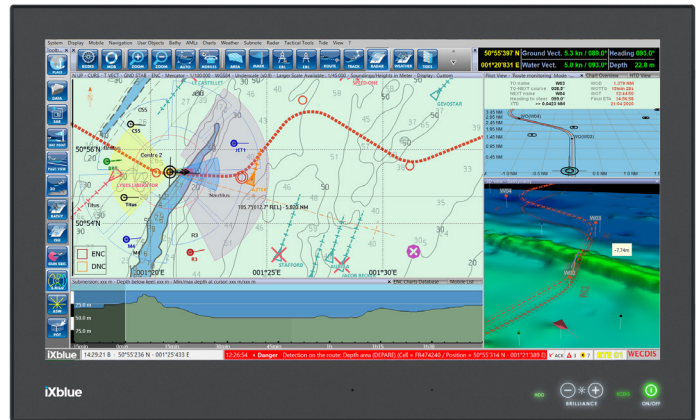


# Gecdis-W

## Warship Electronic Chart Display and Information System

Gecdis-W offers a comprehensive range of specific military features improving tactical situation awareness through the display and process of a broad range of critical information.



### BENEFITS

- User interface fully configurable
- High-performance chart engine
- Charts development and maintenance ensured by iXblue (ENC, ARCS, DNC, AML)
- Modular architecture
- Multi-window management
- Display available on all screen sizes (up to 55")
- Touchscreen compatibility
- Multi-user, user-rights and login management

### ADVANCED FEATURES

- GNSS jamming/spoofing detection through Cetos e-positioning module (multi-sensors positioning solution)
- Celestial navigation
- Depth Line Running Fix (DRLF)
- Grib weather overlay
- Tide calculation and display
- Radar overlay (up to 5 radar sources, ASTERIX CAT-240 compatibility)
- Advanced user objects functions and filters (mark, area, line, spline, sector, ...)
- PIM plan
- Predictive outline

### APPLICATIONS

- Navigation (surface vessels and submarines)
- Surveillance
- Interception
- Mine warfare operations
- Search and rescue operations

- Risk detection in user navigation areas
- Multi-mobile and multi-fleet management
- AIS/ARPA correlation with priority management
- Collision risk detection
- Ship management and target tracks
- Replay of fleet and mobiles situations
- High-performance and fast 3D bathymetric and bottom discrimination view
- 2D colored surface and isoline overlay (bathymetric information displayed in 2D)
- Real-time recording and display of bathymetric data from depth sounders and/or multibeamers

## MAIN ECDIS FEATURES

- ENC/ARC/DNC charts representation
- Polar projection (North and South)
- Route planning and monitoring
- Route Plan Exchange (RTZ)
- Search And Rescue (SAR) diagrams
- Anchor watch management and alert
- Go / No Go area
- Navigation tools (EBL, ERBL, VRM, LDL...)
- Position fix
- Display plausibility and integrity of the CCRS data from the INS

## NAVIGATION SYSTEM

- Connection with INS (IEC 61924 Ed. 2 compliant)
- Communication with VDR, BAM, BNWAS, NAVTEX
- Automatic workstation data synchronisation (charts, routes, user objects, tactical data)

## COMPATIBILITY

- Operating system: Windows 7 and Windows 10
- Minimum configuration: RAM 2GB, HDD 40GB, CPU Intel i3, 1 USB port for the software protection dongle

## COMPLIANCE

IMO	IEC	IHO	NATO
IMO A.694(17)	IEC 60945 Ed. 4	IHO S-52 Ed. 3.1	NATO STANAG 4964
IMO MSC.191(79)	IEC 61162-1 Ed. 5	IHO S-52 (Annex A) Ed. 4.0	NATO STANAG 7170
IMO MSC.232(82)	IEC 61162-2 Ed. 1	IHO S-57 Ed. 3.1	
IMO MSC.302(87)	IEC 61162-450 Ed. 1 AMD1	IHO S-63 Ed. 1.2.0	
	IEC 61174 Ed. 4		
	IEC 62288 Ed. 2		

## WARSHIP FEATURES

- AML charts representation (IWC, CLB, ESB, LBO, MFF, RAL, SBO)
- Common Geographic Reference System (CGRS)
- Gun sector
- Anti-Submarine Warfare
- Moving Haven (MHN)
- Submarine bathymetric profile
- 2W
- Tactical grids
- Tactical screens
- Automatic CMS targets classification

- Multi-Function Display through iXblue Bridge Management System (BMS)
- Display mode workstation synchronization
- Backup/restore management