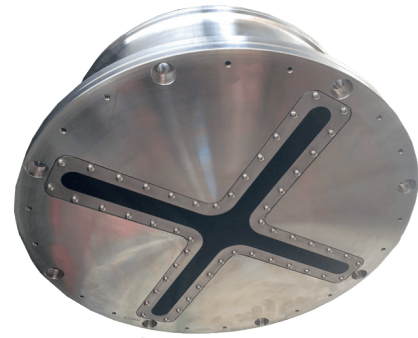


# SeapiX-C

## Volume 3D sonar for marine works

SeapiX-C is a solid-state 3D multibeam sonar that provides highly accurate and real-time georeferenced static bathymetry. It enables instant monitoring and decision-making for more efficient and safer marine works operations.



### FEATURES

- Station-based bathymetry covering a wide area (up to 10,000m<sup>2</sup> at 30m depth)
- Real-time monitoring
- No moving parts for better accuracy and reliability
- High resolution (1.6°x1.6°x7.5cm)
- Multi-head configuration capability
- Easily operated, no need for specialized surveyor

### MARINE WORKS APPLICATIONS

- Jack-up barge deployments
- Dredging operations
- Infrastructure monitoring

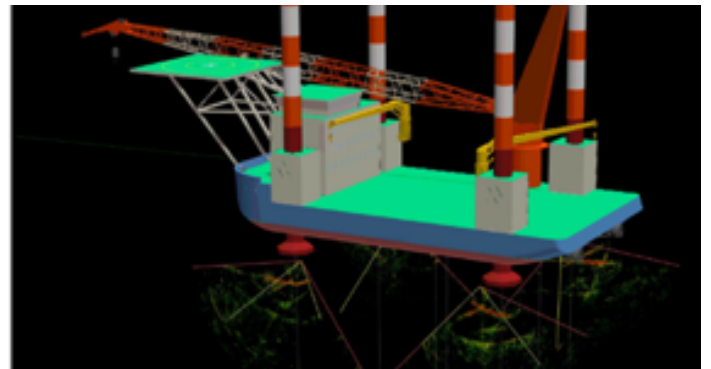
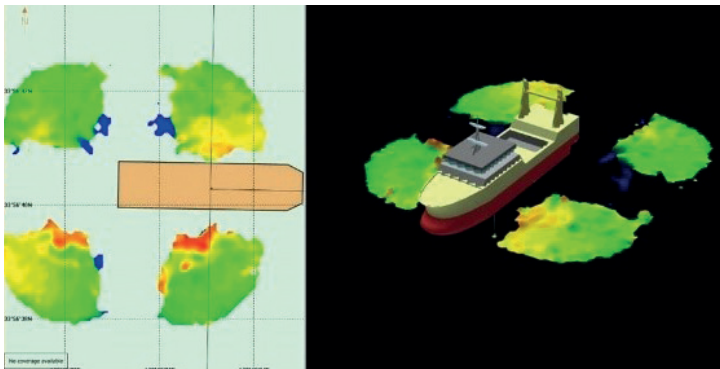
### ECDIS-BASED SOFTWARE

#### Jack-up barge deployments

- Single user-friendly interface
- Real-time static bathymetry data displayed in 2D/3D volume map
- 3 available modes: static, standard, scanning
- Additional indicators displaying critical information

#### Dredging operations

- Acquired data integrated within existing dredging software



## TECHNICAL SPECIFICATIONS

Aperture	120°
Frequency	145 khz to 155khz
Number of beams per swath	256 beams Along track and 256 beams Across track
Single element beam opening	1.6°
Array	Steerable Symetrical dual Multibeam. No moving part.
Multi-head capability	Up to 4 simultaneous heads managed by a single interface
Modes	Classic Bathymetry, Static Bathymetry, Scan
Acoustic processing with navigation	Realtime acoustic data fusion with navigation GIS system
3D acoustic presentation	2D and 3D acoustic presentation
Bathymetry	Bathy from all swath, dynamic and static bathymetry
Navigation & Chart system	Embedded ECS Navigation and charting system
Recording / Export	RAW Data, S7k
Motion sensor	embedded
Network	Copper Gigabit Network (Optical Fiber in option)