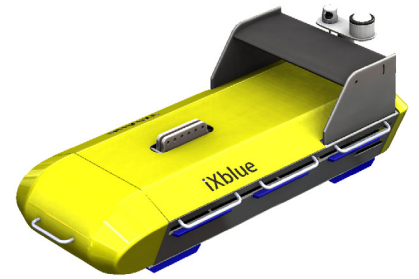


Sams Series

Synthetic Aperture Mapping Sonar

Based on unique inertial navigation, acoustic positioning and sonar imaging data fusion. iXblue offers a complete range of high-productivity sonar mapping system.



Sams MT-3000



Sams DT-6000

FEATURES

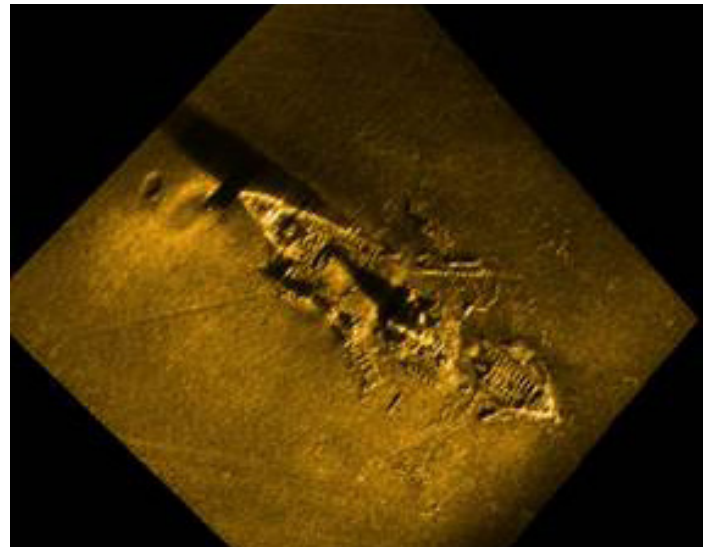
- Real-time High resolution / Full swath seabed mapping: Synthetic Aperture Sonar and Gapfiller
- Full survey package: sonar imaging, bathymetry, subbottom profiling, magnetometry, pinger locator
- State-of-the art Delph geophysical Software suite runs the multisensor platform, from acquisition to post-processing.

BENEFITS

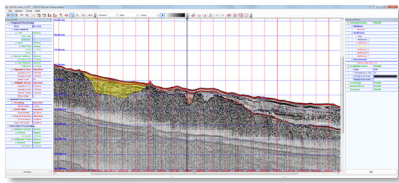
- Real-time generation of high-quality maps: more time can be spend on high-value tasks such as interpretation and reporting (instead of processing).
- Sams can be used in higher sea states thanks to built-in sonar motion compensation.
- Real-time multi-sensor data fusion: like a towed AUV, Sams platform can integrate other sensors such as: Multibeam Echosounder (for bathymetry and gapfiller backscattering imaging), Subbottom Profiler, Magnetometer, Pinger locator.

MAIN APPLICATIONS

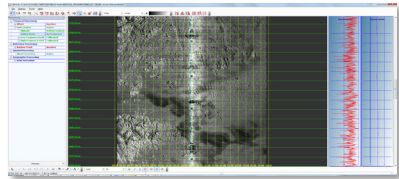
- EEZ Mapping, Continental shelf extension, Marine Boundaries Delimitations
- Law of the Sea
- Environmental Monitoring
- Debris survey
- Pre-site survey
- Cable Route Survey
- Deep-sea mining
- Marine Renewable Energy



Dedicated sensor modules accessed from a central 3D visualization engine

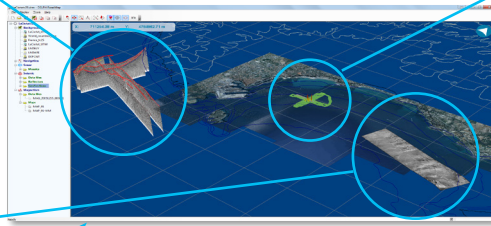


Seismic / SBP

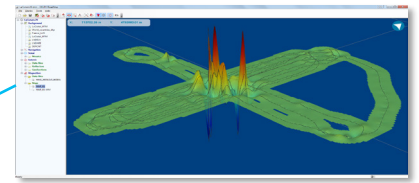


Side/SAS/Mbes Sonar

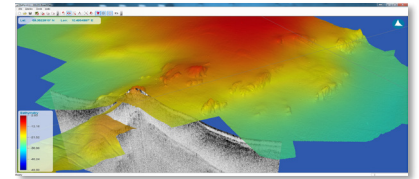
3D Spatial Data Integration



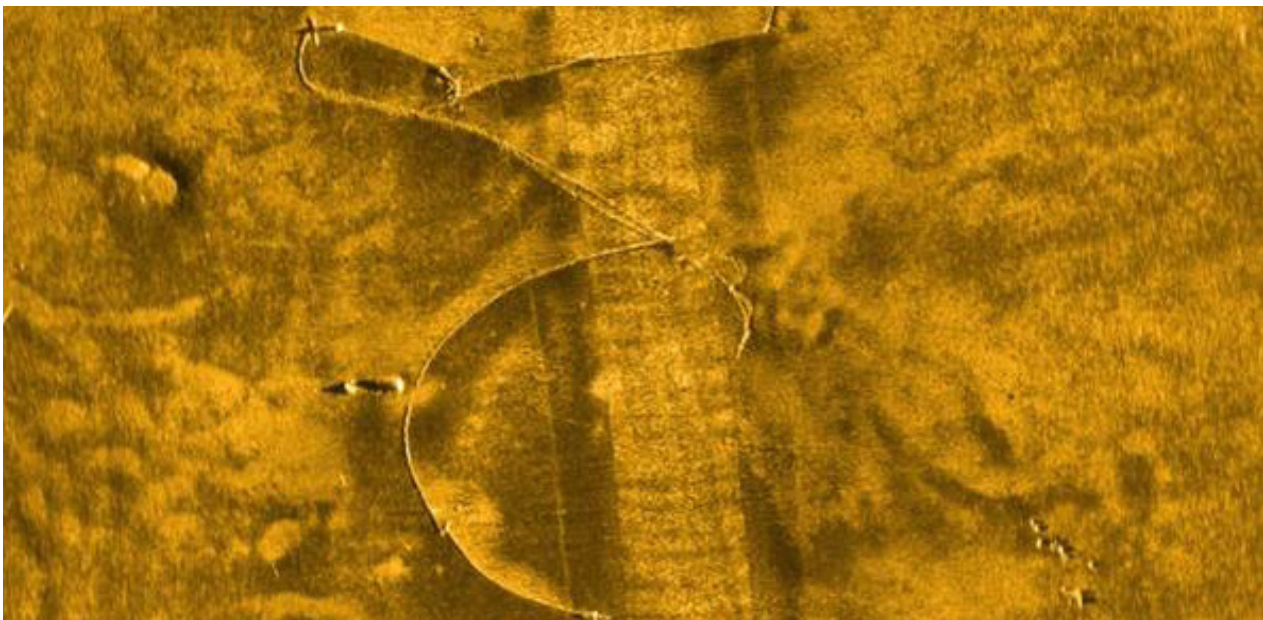
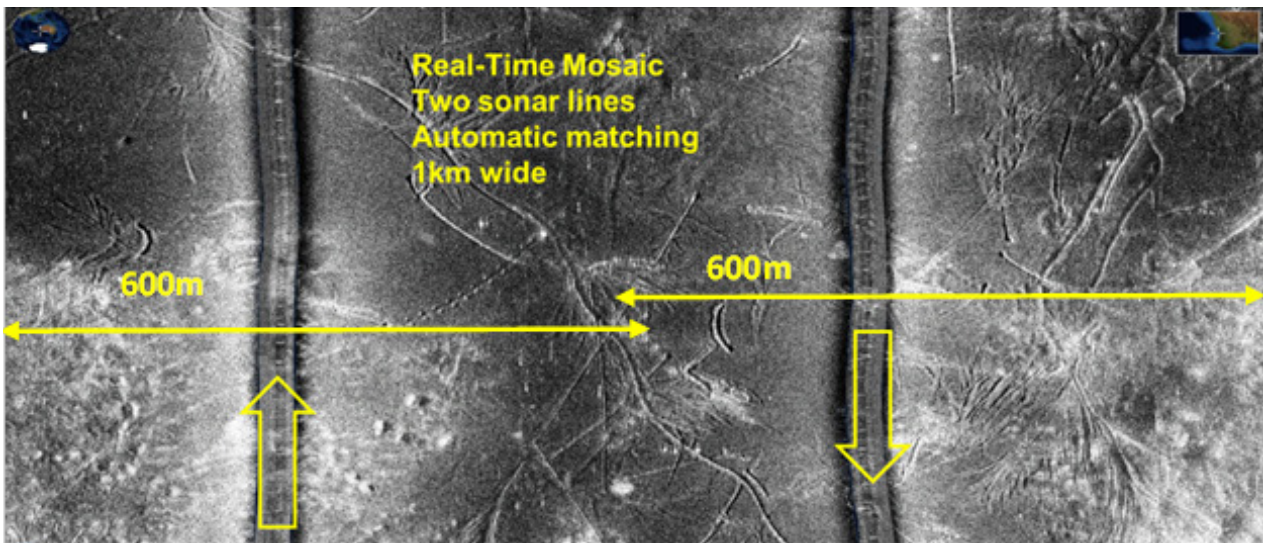
USBL/INS
Navigation data



Magnetometer / Gradiometer



Bathymetry



TECHNICAL SPECIFICATIONS

| | Sams MT-3000 | Sams DT-6000 |
|--------------------------|---|--|
| SSS Frequency | 100kHz | 55kHz |
| Bandwidth | 30kHz | 15kHz |
| Range | <=300m | <=750m |
| CapFiller | 3 rd -part MultiBeam Echosounder | 3 rd -part MultiBeam Echosounder |
| Full swath | 600m | 1500m |
| Depth | <=3000m | <=6000m |
| Along-track resolution | 15cm constant resolution in optimal condition | 50cm constant resolution in optimal condition |
| Across-track resolution | 2.5cm | 5cm |
| Speed | ~2-10knots | ~2-7knots |
| Navigation & Positioning | USBL+INS+ DVL+SVP | USBL+INS+DVL+pressure sensor+SVP |
| Other sensors | Magnetometer, Subbottom Profiler, Pinger Locator | Magnetometer, Subbottom Profiler, Pinger Locator |
| Dimensions (l x w x h) | 2.2m x 1m x 0.9m | 3.3m x 1m x 1.5m |
| Weight in air/water | 280kg/120kg ; (200kg removable additional dead weight) | 1100kg/neutral |
| Electrical power supply | 600V - 1200W | 600V - 1200W |

SAMS KIT FOR ROV/AUV

Based on Sams towfish design, Sams is also available as a payload for ROV and AUV. Sams KIT-3000 and Sams KIT-6000 couple with embedded navigation (INS) and positioning (USBL) to perform geolocalized synthetic aperture imaging and achieve similar performances than Sams MT-3000 and DT-6000 respectively.

