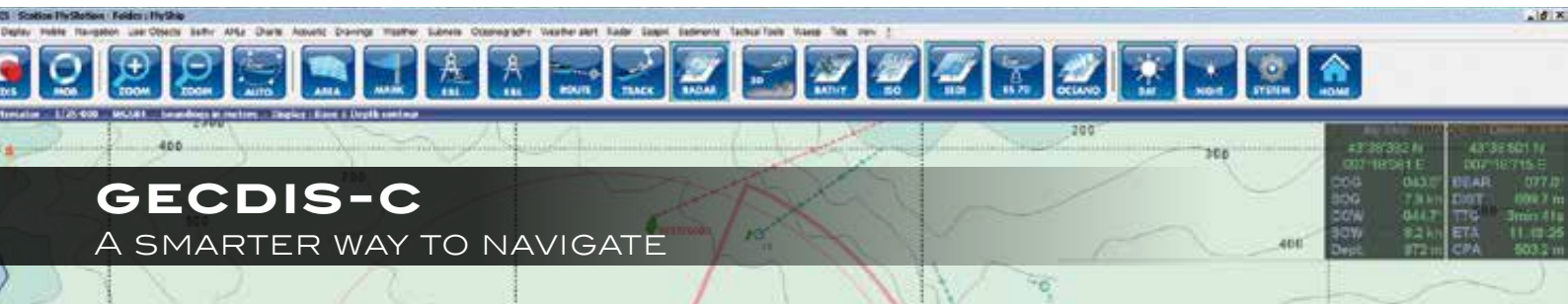


# GECDIS-C

A SMARTER WAY TO NAVIGATE



 **IXBLUE**  
DEEP INSIGHT. SHARPER SENSES.



# GECDIS-C

## A SMARTER WAY TO NAVIGATE

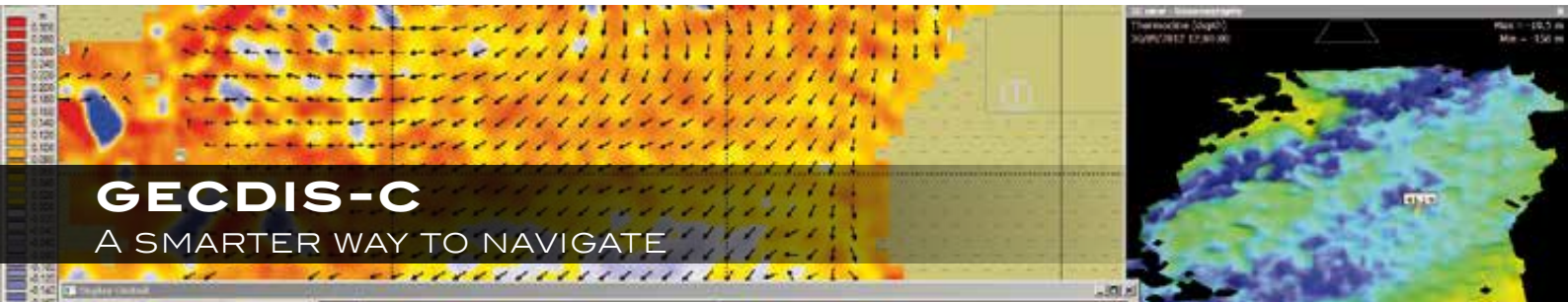
**GECDIS-C** is **iXBlue**'s new ECDIS (Electronic Chart Display and Information System), that has been designed to be fully compliant with the latest IEC IMO and IHO standards and regulations.

**GECDIS-C** benefits from **iXBlue**'s nearly 30 years' experience in designing and maintaining electronic navigation systems. The group has been delivering electronic chart systems since the early 90s and ECDIS-type approved systems since 2000.

We are proud to present a track record of more than 6 000 navigation systems, covering a broad range of vessel types: passenger ships (ferries, cruising vessels), tankers, cargo ships and workboats.

Thanks to its modular architecture, **GECDIS** is both scalable and configurable and can be adapted to a large range of navigation requirements.





# GECDIS-C

## A SMARTER WAY TO NAVIGATE

### THE MAIN FUNCTIONS OF THE SOFTWARE INCLUDE:

#### Display of electronic charts

The software enables all standard chart formats to be displayed (OHI's ADVANS inertial systems are robust to GPS drop-out, essential for blue force tracking; other format include ENC-S57, UKHO's ARCS, NIMA's DNC, etc.).

#### Navigation planning

Advanced navigation planning capabilities enable the operators to plan the routes precisely.

#### Data recording and replay

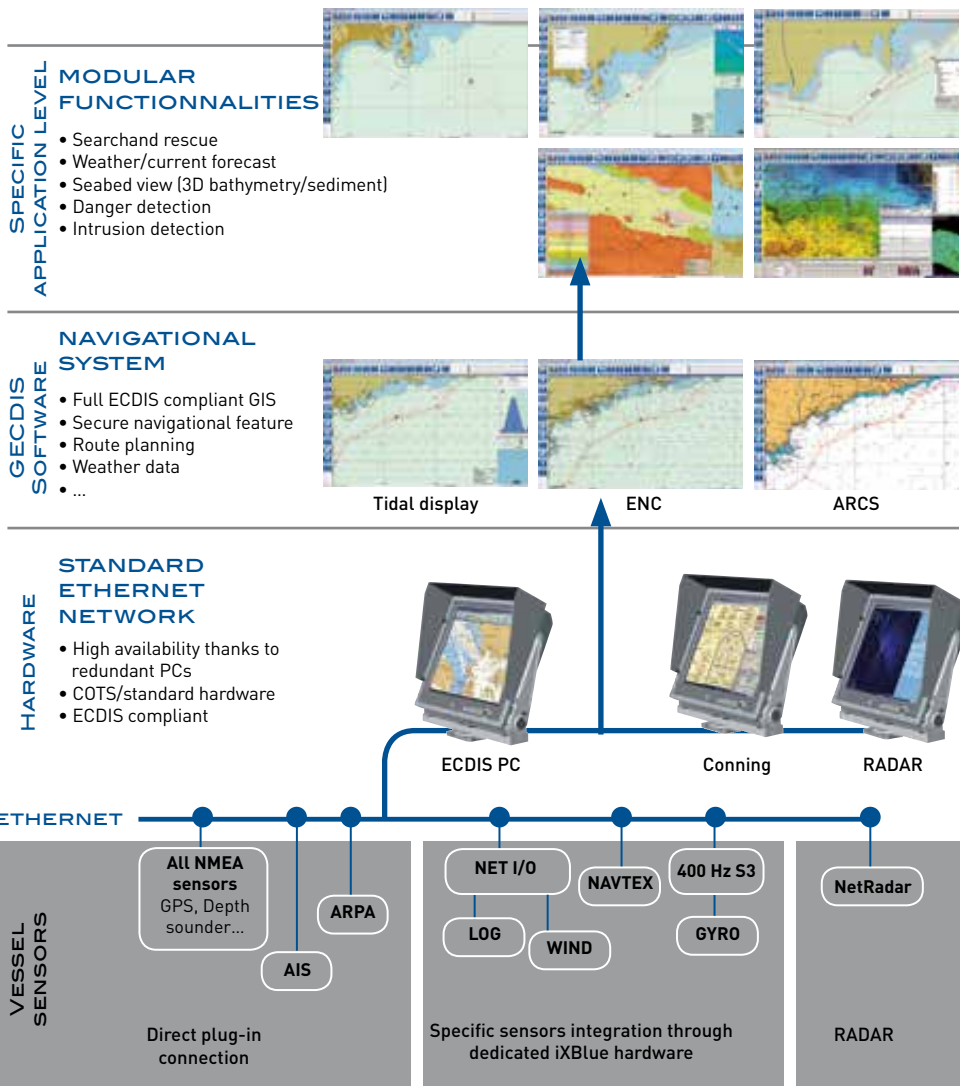
All navigation information can be recorded throughout a mission for post-analysis and debriefing purposes.

#### Alarms definition

Whenever a vehicle enters the user defined alarms area, the operator is warned by a visible and audible alarm.

#### Multi-sensor data fusion

RADAR/(W)AIS/video data fusion for optimal tracking and identification.



# GECDIS-C

## ADVANCED NAVIGATION FEATURES

**GECDIS-C** provides the navigator with unique navigation aid functionalities that go beyond ECDIS requirements:

- A combination of 2D and 3D views enhance the perception of the environment
- Sensors integration
- The software supports information display from a broad range of sensors
- Additional information layers
- Multiple layers can be displayed in the software, each layer contributing a new level of information. The unique key information layer management system renders the software capable of evolving by adding new layers on top of the existing ones (weather forecast, meteorological, tidal, RADAR overlay, etc.)



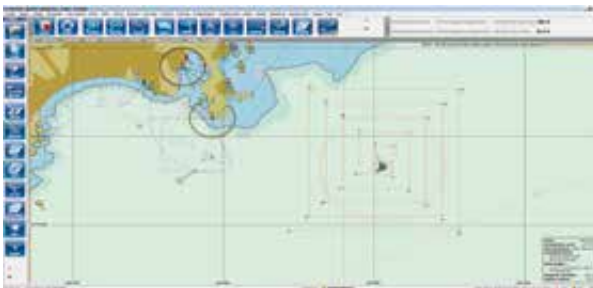
### Route monitoring functionalities

**GECDIS-C** is able to propose context management: an environment of data windows and automatically adjustable tools depending on the particular navigation.



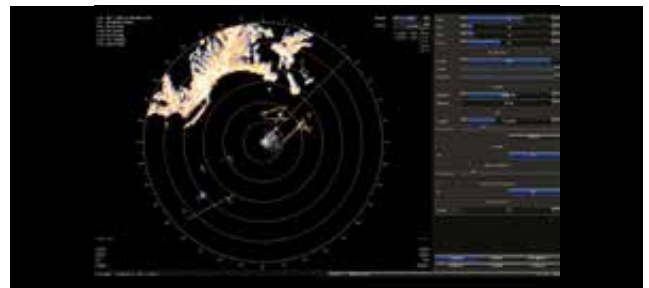
### Anti-grounding and danger detection

**GECDIS-C** proposes many different configurable alarms to warn the user of inconsistencies in depth, position, depth under the keel, etc. The alarms are configured according to the user's rights.



### Intrusion detection functionality

In terms of current day risk management (piracy, theft, etc.), compulsory functions of **GECDIS-C** include the ability to define zones and also to set off alarms when a boat enters or leaves a zone.



### True multifunction radar console

**GECDIS-C** goes even further: capturing radar signaling for the scanner, offering its own radar/man machine interface and also decoding radar protocol so as to order it directly from the same multifunction console.



## GECDIS-C

GLOBAL NETWORK

**iXBlue**'s main competitive advantage is its highly skilled engineering team which always proposes the most suitable solution for your needs. **iXBlue** is ISO 9001 certified.



### SERVICE AND SUPPORT

Being at the cutting edge of innovative ECDIS technology naturally gives **iXBlue** a head start but what would happen if you suddenly needed top-priority assistance? That is where our un-paralleled 24/7 global support network comes in. Any time of day, any day of the week and we are there for you wherever you are, whatever you want.

### INSTALLATION

Installation is not always a straightforward affair; however, **iXBlue**'s lineup of vastly experienced technicians ensures that things go as smoothly as they possibly can. Before installation, a thorough appraisal is carried out of all the prerequisite tools and equipment which in turn guarantees the highest possible quality of workmanship.

### TRAINING

Once again, experience is the key word. Our certified and accomplished coaches include engineers, mariners/skippers and specialists in the field of navigation. Each and every instructor has a particular skill in conveying their expertise and know-how, whilst adapting the training to your crew's needs. Training sessions can be set up either at your own premises or at one of the large number of facilities run by **iXBlue** throughout the world.

### SOFTWARE DEVELOPMENT KIT (SDK)

The software development kit enables you to add various functions according to your needs. You will be given a training course where you learn how to implement the software, after which you will be completely independent.



EMEA: +33 1 30 08 88 88 • AMERICAS: +1 781 937 8800 • APAC: +65 6747 4912

[www.ixblue.com](http://www.ixblue.com)

