



# Ecdis-W

## WARSHIP ELECTRONIC CHART DISPLAY AND INFORMATION SYSTEM

Ecdis-W is a comprehensive system: it is fully Ecdis and Wecdis compliant, user-friendly and encompasses state-of-the-art military and surveillance features. Ecdis-W presents a comprehensive range of specific military features in order to improve tactical situational awareness. Ecdis-W enables the display and processing of a broad range of critical information.

### Applications

Navigation – Surveillance – Interception – Mine and collision avoidance  
Mine warfare operations – Fishery surveillance – Search and rescue operations (SAR)

### Features

- Compliance to IMO ECDIS
- Compliance to WECDIS NATO: AML, Screen Kilo, gun sectors, haven moving
- 2D/3D representation
- ENC/ARCS/BSB/DNC chart representations
- S57/S63/S52 compliant
- AIS/RADAR/Video interfacing
- Software development kit

### Benefits

- Strategic framework representation: routes, areas and limits, gun sectors
- Enhanced navigation accuracy and reliability
- 2D/3D positioning of underwater vehicles (AUV and SDV)
- Real-time seabed mapping and danger detection
- Mission planning and debriefing

# Ecdis-W

## Technical specifications

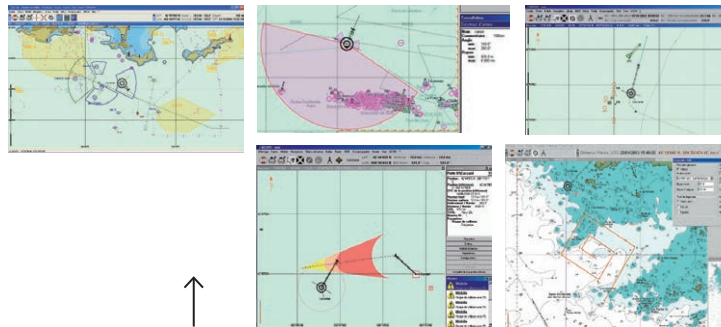
CECDIS-W SOFTWARE

### Wecdis Functionalities

- AML
- SAR
- Tactical situation
- ASM
- Seabed and mine hunting
- Water column

### Ecdis navigational system

- Full Ecdis compliant GIS
- Secure navigational feature
- Route planning
- Weather data
- ...



Tidal display

ENC

ARCS

HARDWARE

### Standard Ethernet network

- High-availability thanks to redundant PCs
- COTS/standard hardware
- Ecdis compliant



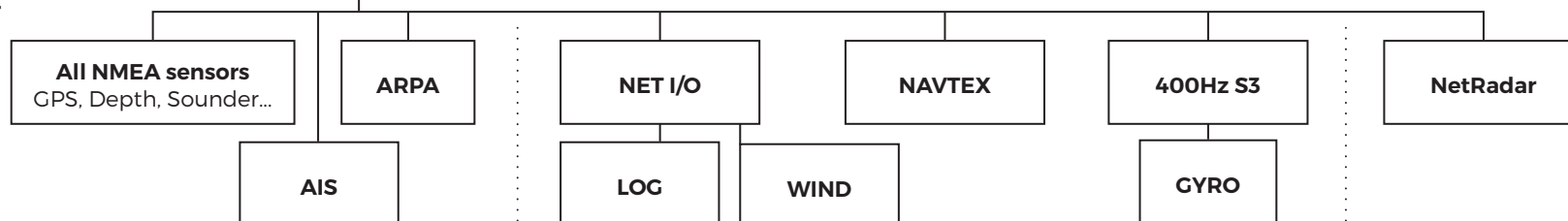
ECDIS PC

Conning

RADAR

VESSEL SENSORS

### ETHERNET



Direct plug-in connection

Specific sensors integration through dedicated iXblue hardware

RADAR