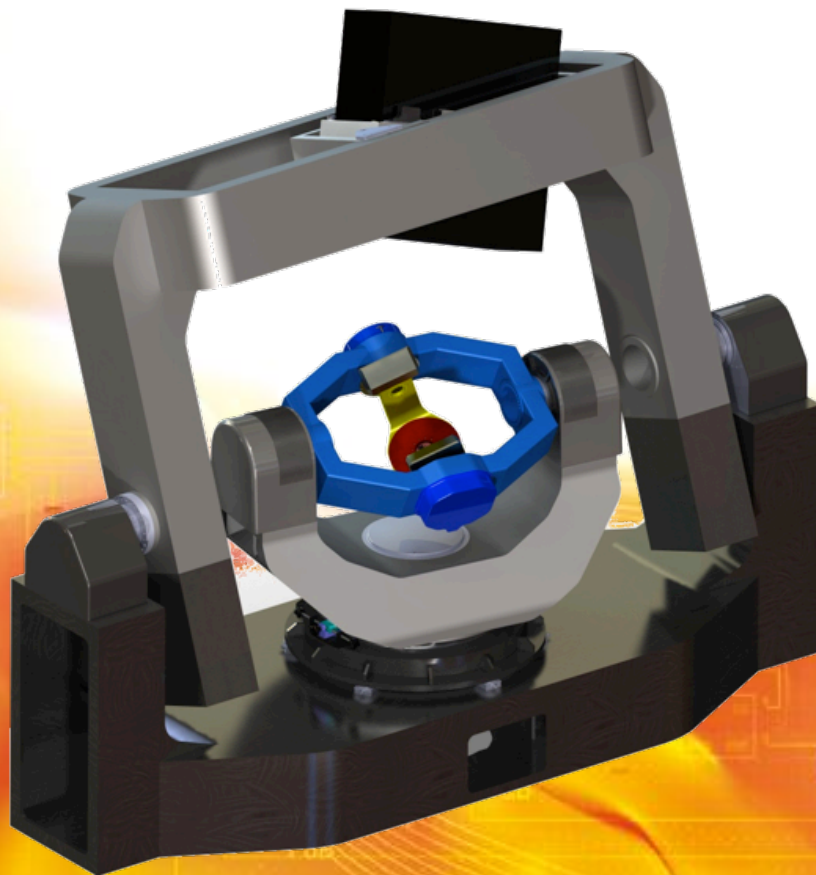


Full range of Motion Simulators that evolve with your needs

iXMotion 7-Axis Dynamic Motion Simulators DMS Series
4-Axis Flight Motion Simulator FMS-40 Series
3-Axis Target Motion Simulator TMS-30 Series

DMS Series

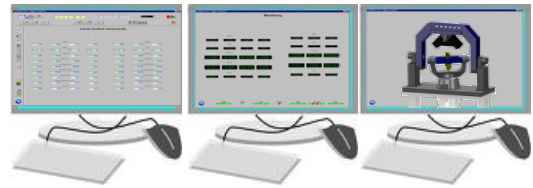
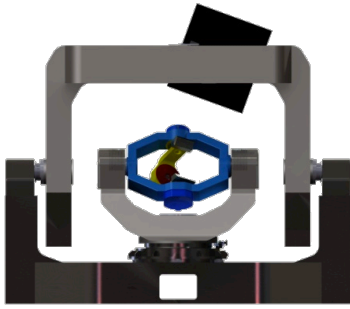


iXMotion multi-axis motion simulators **DMS Series** are dedicated to simulate the motions of vehicles and motions of targets; they are a combination of two to several motion simulators controlled by the same system management. **iXMotion** multi-axis motion simulator **DMS Series** is composed by:

- ✓ **Flight Motion Simulator - FMS Series:** Multi-axis motion simulators (from three rotational axes to n axes). FMS is the motion simulator that simulates motions of vehicles,
- ✓ **Target Motion Simulator - TMS Series:** Multi-axis motion simulators (from two linear or rotational axes to n axes). TMS is the motion simulator that simulates motions of targets.

All **iXMotion** multi-axis motion simulators **DMS Series** use the unrivalled **iXMotion Multi-Axis ProAxe* Controller** and are managed by the user-friendly **iXMotion Multi-Axis ProAxe Software**.

All **iXMotion** multi-axis motion simulators **DMS Series** work in local mode, in remote control mode and in real time (Hardware-In-the-Loop HWIL capabilities with servo loop of 500 μ s).



DYNAMIC MOTION SIMULATOR COMMAND & CONTROL CABINETS

COMMAND & CONTROL CONSOLES

4-Axis Flight Motion Simulator FMS-40 Series

- Unlimited rotational freedom on four axes
- Up to 1000 deg/sec rate and 5 000 deg/sec² acceleration
- Up to ± 1 arcsec position accuracy
- Up to ± 1 arcsec position repeatability
- Up to 1.10-5 deg position resolution
- Weight of UUT from 30 to 10 kg

3-Axis Target Motion Simulator TMS-30 Series

- Two rotational axis and one linear axis
- Rotational Freedom of inner axis up to ± 30 deg
- Rotational Freedom of external axis up to ± 120 deg
- Linear Freedom of middle axis up to ± 300 mm
- Weight of UUT from 50 kg up to 300 kg

- Real-Time operation / HWIL with servo loop of 500 μs
- ProAxe* Multi-Axis Controller and Software
- Control and command of embedded mounted system

DMS - Series

Control of the n-Axis of the DMS via Control Consoles with ixMotion Multi-Axis ProAxe Software



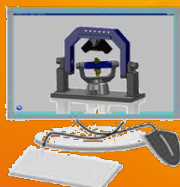
First console: Control & Command of n-Axis of the DMS System

- Position mode (position profile)
- Rate mode (angular rate profile)
- Synthesis mode (periodic motion programmed with amplitude, frequency and phase)
- Track mode (trajectory files)



Second console: Monitoring of n-Axis of the DMS System

- n-Axis for FMS
- n-Axis for TMS
- Status and alarm of the n-Axis TMS



Third console: 3D Vision of n-Axis of the DMS System

3D visualization of the n-Axis Flight Motion Simulator FMS motions and of the n-Axis Target Motion Simulator motions either during operation or for simulation.



* Patent pending

EMEA : +33 1 30 08 88 88

AMERICAS : +1 781 937 8800

APAC : +65 6747 4912

www.ixblue.com